

BETA THETA PI



2025

Zeta Phi Rush Guide



DEAR RUSHEES,



With your high school days drawing to a close, many difficult decisions await you. Without question, this point has been reiterated to you countless times. While those choices may appear to be significantly distant, there are means to aid you in these decisions. The fraternal organizations at the University of Missouri offer support in a variety of ways.

Many distinguished collegians have traveled through the halls of Old Missouri, and a significant number of them have chosen Beta Theta Pi as a means to meet their goals. These goals go well beyond career oriented objectives. Quite simply, the University has a lot more to offer than just what is learned in the classroom, and membership in an organization such as Beta Theta Pi is an excellent way to get the most out of your college experience. Without qualification, the most important benefit of joining Beta Theta Pi is the friendship and brotherhood that is fostered during your time here. In addition to these friendships, maintaining what we call "A Tradition of Excellence" is taken quite seriously.

In choosing a fraternity, you should look for a group of men whose ideals and goals most closely parallel your own. This is where you will see the differences in the fraternities on Mizzou's campus. I would strongly encourage that you meet as many different fraternity men as possible, but more importantly, that you seek out what each group holds as its core beliefs and aspirations.

While you page through this recruitment guide, keep your own ideals and goals in mind. Hopefully you will find that those that Beta Theta Pi represents are the same as your own. As recruitment chairman, I look forward to meeting you and your family in the upcoming months, and I hope you consider what Beta has to offer. In addition, feel free to contact me, or any of the three regional recruitment chairmen with any questions and concerns.

Sincerely,

Luke Eisenhart

HEAD RUSH CHAIRMAN

(314)-277-4545

LUKE.A.EISENHART@MISSOURIBETA.COM



REGIONAL CHAIRS



BRADY CYTRON

ST. LOUIS REGIONAL

RUSH CHAIRMAN

(314) 882-3224

BRADY.M.CYTRON@MISSOURIBETA.COM



JACK GATES

KANSAS CITY REGIONAL

RUSH CHAIRMAN

(913) 233-6474

JACK.P.GATES@MISSOURIBETA.COM



DREW BURNS

RURAL REGIONAL RUSH

CHAIRMAN

(660) 541-5140

ANDREW.D.BURNS@MISSOURIBETA.COM





GRIFFIN BEEN ALEX CLEMENT MAX CLOSE JADEN CORRENTI GABE DUCEY AUSTIN FULTON GARY GAERTNER GRANT GOMEL CONNOR HAAKE MICK HANON VINNY HODES



GAVIN O'HEARNE
SOCIAL CHAIRMAN KYLE KLOSTERMANN
ARCHIVIST JACKSON NIXON
RECORDING SECRETARY BILLY JONES
PHILANTHROPY CHAIRMAN HENRY CAPRIO
SCHOLARSHIP CHAIRMAN ZACH YATES
SCHOLARSHIP CHAIRMAN WILL ANDREWS
RISK MANAGER JAKE POWELL
NEW MEMBER EDUCATOR ETHAN BELVAL
VICE PRESIDENT GAVIN BIANCALANA
PRESIDENT JACK CLARK
HOUSE MANAGER



JOE MILES WILLIAM MONTGOMERY PATRICK O'KEEFE LOGAN PESCIAGLIA KENNETH POTTINGER JACK RICHARDS CONNER RICHMOND

Beta Theta Pi

ZETA PHI CHAPTER



CONRAD WENDLING GARRETT WILLIAMS JAKE BAUER DAVISON BIRCHFIELD BRODY BROWN MASON CLOSE

2024

2025



EVAN KOHN GAGE LEAMER JACK MORGAN EMMETT PEARCE ALEX POLLITE THOMAS PREVOST

University of Missouri



PETE BARRY HUNTER BOWMAN DREW BURNS BRADY CYTRON ETHAN EDWARDS LUKE EISENHART JACK GATES MILES GOOBEE



MAUREEN FAHRENHOLZ
HOUSE MOTHER



JIMMY GOMIC



ZACH MORGAN COLBY MUELLER GEORGE REBMAN BRAYDEN REYNOLDS FRANK RUETHER TJ SCHAEFFER JAKE SCHNEIDERMAN CASH SCHOPFLIN SAM SHAFF BRAEDEN THOMAS ANDREW THOMPSON



CHARLIE CALKINS VINCE CLARK JOSEPH DAMES SAMUEL DEW THOMAS DONELON COLE EBLEN RYAN FANNING ALLAH HIBNER DANIEL HODSON LOGAN HOLTHAUS JIM HUMPHREY

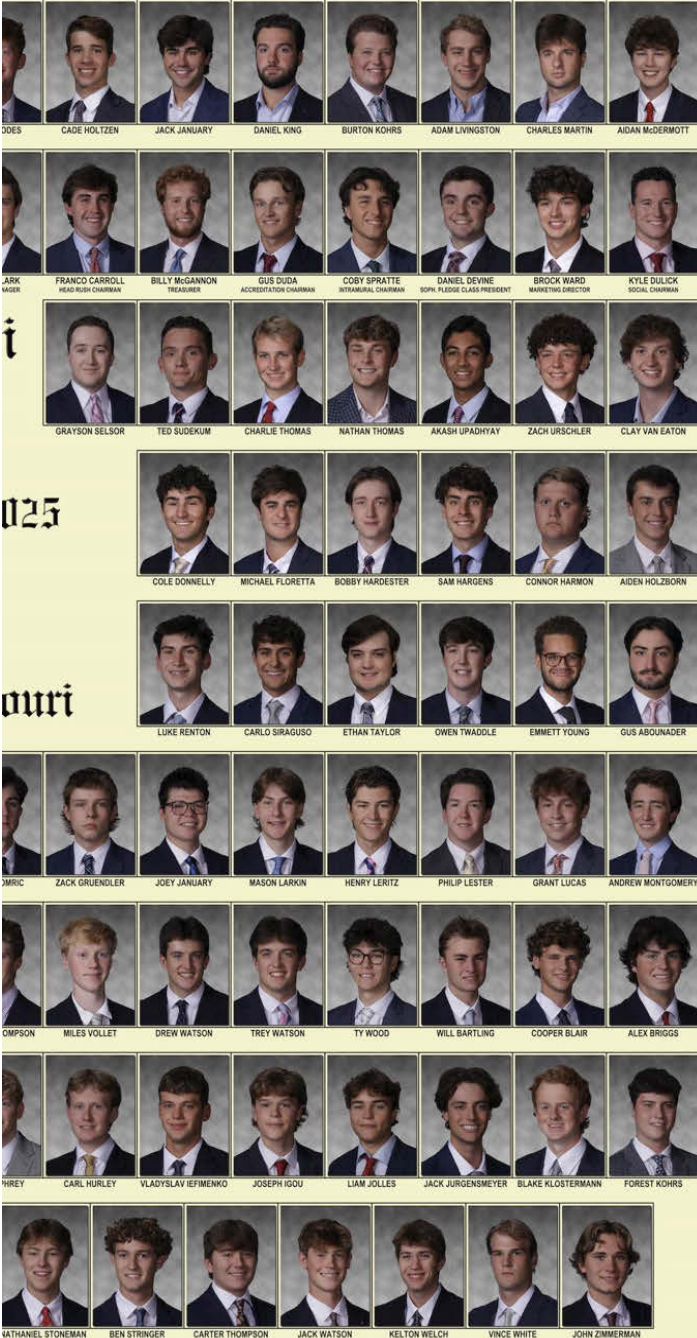


CHARLIE KRAMER DANIEL LEVY JAMES MATHIEW GUS MOEHLE BEN PERUZZI PRESTON RAMSEUR CHARLES RICHMOND OLIVER SOHOSKY EVAN SPRATTE BEN STALLINGS NATHAN

NOT PICTURED: BEAU DOLAN

Zeta Phi at a Glance

- **Active Members:**
139
- **Fall 2024 Pledge Class:**
37
- **President:**
Daniel Devine
- **Rush Chairman:**
Luke Eisenhart
- **Vice President:**
Phil Lester
- **House Manager:**
Drew Watson
- **New Member Educator:**
Ethan Edwards
- **Risk Manager:**
Trey Watson
- **House Mother:**
Maureen Fahrenholz
- **Chapter Address:**
*520 S College Ave.
Columbia, MO 65201*
- **Website:**
<https://missouribeta.com>
- **Founding at Mizzou:**
Nov. 7, 1870
- **Newhouse built:** *2012*
- **Years on campus:**
154
- **Average GPA:**
3.403



VANTINE IMAGING HAMILTON, N.Y. #11920343 800-448-8084 vantine.com

WHY ZETA PHI?

The University of Missouri has one of the strongest Greek communities in the nation, mostly because of the large number of great fraternities, each with their own strengths and traditions that make them unique.

What sets Beta Theta Pi apart from all other fraternities is its pursuit of success, and its drive to be the best, whether in academics, intramurals, socially, or involvement in student organizations.

The Beta's efforts in all areas of college life are well recognized. The scholastic and intramural trophies for the top fraternity seem to have made a permanent home at the Beta House. Its success in Greek Week and other philanthropies result from hard work and determination that each man puts forth. The brothers of Beta Theta Pi not only have made a commitment to each other, but also to their own futures. The Beta's success travels with him well beyond his college years. All Beta men seem to have the character that brings them a similar excellence in life.

Some of the most distinguished men in America have come from the Zeta Phi Chapter of Beta Theta Pi. One such man is Samuel M. Walton Missouri, 1940, the founder of Wal-Mart, and the winner of the Presidential Medal of Freedom. At the time of his death, Sam Walton was the wealthiest man in America. Despite his successes, he lived a modest life, and credited his Beta experience as a huge part of his success. His success in the business world is literally unparalleled,

and this success can be attributed to his hard work and constant pursuit of excellence, both of which are skills that are fostered by every member of this distinguished Chapter.

“I HAD MY PICK OF THE BEST. I CHOSE BETA THETA PI BECAUSE THEY WERE THE TOP SCHOLASTIC FRATERNITY AND HAD LED THE INTRAMURAL LEAGUE FOR A NUMBER OF YEARS.”

-SAM WALTON



In the end, the questions “Why Beta?” or “Why Zeta Phi?” can be answered in one word: excellence. Whether it refers to our emphasis on leadership, scholarship, or brotherhood, we strive for excellence in everything that we do. We hope that you will choose to join us in this constant and worthwhile pursuit.





ZETA PHI HISTORY

Zeta Phi is proud of its many 'firsts,' including having Mizzou's first student member of The Board of Curators, Mizzou's first Homecoming King, and receiving the first Beta Theta Pi's International Sisson Award.

There has long been a desire amongst men to join together and strive for excellence. It was this desire that led seven men of the Union Literary Society alongside Oren Root Jr. to create such a society. On Nov. 7, 1870, the Zeta Phi Society was born as a, "secret society, the objective of which was to be a social and intellectual culture, as well as [to develop] close intimacy through life."

Several national fraternities seeking expansion approached Zeta Phi. The men of Zeta Phi declined the offers to join these fraternities until 1890, when they were approached by Beta Theta Pi. Soon after, on March 8, 1890, the Zeta Phi chapter of Beta Theta Pi was born.

Early on, the Betas met occasionally on campus to discuss current issues of the chapter. In 1901, they began

living together in a two-story house at 201 S 9th St. As the chapter grew in size, a larger living establishment was required. In 1904, a three-story house was constructed at 714 Missouri Ave. This building was funded largely by donations from the Zeta Phi Corporation, a group still alive today. When this building caught fire on Jan. 1, 1912, the Beta Alumni constructed a house at 520 S College Ave., where the Beta House stands to this day.

In 1917, Zeta Phi was honored as the first recipient of the Sisson Award, Beta Theta Pi's national award for the chapter which, "most nearly approximates the ideal chapter," and today Zeta Phi holds the record for most Sissons awards.

Throughout its existence, Zeta Phi's strong traditions have truly built "friends who search together."



ACADEMICS

Zeta Phi holds a long and distinguished tradition of academic excellence, and this is largely a product of our scholarship program. This past fall, Beta as a house achieved a house grade point average of 3.403. The new house on 520 S. College includes multiple private study rooms as well as a full auditorium for study hours. There is a culture of success and excellence at Beta Theta Pi and it is led by our academics. At Zeta Phi, we believe that the strongest indicator of success in college is based upon a freshman's first semester in college.

SCHOLARSHIP CHAIRMEN



COLBY MUELLER

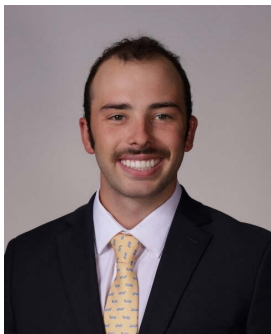


MILES GODBEE



ROLE MODELS

JAKE POWELL



HOMETOWN:
KANSAS CITY, MO
HIGH SCHOOL:
PARK HILL
MAJOR:
ACCOUNTING
GPA:
4.0
EXTRACURRICULARS:
MONETARY DIRECTOR OF
MIZZOUTHON, ASSOCIATION OF
ACCOUNTING STUDENTS
MEMBER, FORMER NEW
MEMBER EDUCATOR



JACK CLARK

HOMETOWN:
STL. LOUIS, MO
HIGH SCHOOL:
LAFAYETTE
MAJOR:
COMPUTER SCIENCE
GPA:
3.82
EXTRACURRICULARS:
ASSOCIATE MEMBER OF UMIG, FORMER
PROJECT MANAGER AND COFOUNDER OF
TIGERQUANT.



GUS DUDA

HOMETOWN:
ST. LOUIS, MO
HIGH SCHOOL:
WESTMINSTER HIGH SCHOOL
MAJOR: MECHANICAL
ENGINEERING
GPA:
3.87
EXTRACURRICULARS:
ENGINEERING SCHOOL
AMBASSADOR



KYLE KLOSTERMANN

HOMETOWN:
ST. LOUIS, MO
HIGH SCHOOL:
LAFAYETTE HIGH SCHOOL
MAJOR:
EDUCATION
GPA:
4.0
EXTRACURRICULARS:
CLP, UMIG ASSOCIATE, AACE VENTURE FUND,
BUSINESS STUDENT AMBASSADOR,
TRULASKE LEADERSHIP
CONFERENCE, STUCO, DEAN'S LIST



BILLY JONES

HOMETOWN:
NASHVILLE, TN
HIGH SCHOOL:
MONTGOMERY BELL ACADEMY
MAJOR:
BROADCAST JOURNALISM
GPA: 3.85
EXTRACURRICULARS:
KCOU 88.1 FM RADIO, FORMER
PHILANTHROPY CHAIRMAN,
Dean's list



BRAYDEN REYNOLDS

HOMETOWN:
KANSAS CITY, MO
HIGH SCHOOL:
SHAWNEE MISSION EAST
MAJOR:
COMMUNICATION
GPA:
3.6
EXTRACURRICULARS:
MIZZOU WOMEN'S BASKETBALL PRACTICE
SQUAD MEMBER



INTRAMURALS



The Intramural Program provides the opportunity for students to compete in over 20 organized sports throughout three seasons of play. The highest point values are given to the most popular sports, such as flag football, soccer, basketball, and sand / indoor volleyball. Due to the size of the Greek community, Intramurals are divided into three divisions based on size of house and talent level. Beta has always been a division one house. Beta won the Fraternity Intramural Championships every year from 1986-2002. Beta has continued to excel and won both the basketball and football championships in 2024. It should be noted that this success on the playing field has always been combined with a strong

desire to maintain sportsmanship and respect before, during, and after the game. Beta's domination of the intramural competitions dates back to the 1930s, when Beta first started winning on a regular basis. The fraternity housed the intramural trophy for over half a decade and has continued to compete ever since.

Our basketball and football teams have more than exceeded expectations over the last few years.

During the 2024 fall semester, the basketball team went undefeated through all of the regular and postseason games. Posting victories with huge point differentials against other top fraternities in every single game played. With an average point





differential of 15 points in every game, the betas continue to exceed through the 2024 fall season still with no losses in the books.

The flag football team has been performing at the top with not only one beta team, but two. Our A team and B team both made the final four of playoffs in the fall of 2024. Leaving a huge mark on the league as no other fraternity had two teams in the playoffs. With that success, the A team pulled through and won the title.

Intramurals aren't all just about winning, Beta has a tradition of immense support too. At all of our intramural games, brothers fill the sidelines to cheer. At championship games, over 80% of our chapter attended the games.

Intramural Record

1974	1st Place
1975	2nd Place
1976	1st Place
1977	2nd Place
1978	1st Place
1979	1st Place
1980	3rd Place
1981	1st Place
1982	1st Place
1983	2nd Place
1984	1st Place
1985	2nd Place
1986	1st Place
1987	1st Place
1988	1st Place
1989	1st Place
1990	1st Place
1991	1st Place
1992	1st Place
1993	1st Place
1994	1st Place
1995	1st Place
1996	1st Place
1998	1st Place
1999	1st Place
2000	1st Place
2001	1st Place
2002	1st Place
2003	3rd Place
2004	2nd Place
2005	3rd Place
2006	3rd Place
2007	3rd Place
2008	2nd Place
2009	2nd Place

*MU changed the ranking system in 2010
Beta is trying to bring back the ranking system*

INTRAMURAL CHAIRMAN



COBY SPRATTE



SOCIAL LIFE



Greek life at the University of Missouri is the quintessential way for incoming freshmen to experience the vitality of MU. First-year students soon realize that college is not only a place for academics but also a place for fun. Like all Greek organizations, Beta recognizes the need for relaxation; however, our chapter is capable of maintaining an extremely enjoyable social environment while maintaining our academic focus and excellence.

Beta's social scene is a wonderful way to make new friends and interact with all sorts of people. The new members

for the upcoming semester will have the benefit of not only getting to know members of numerous sororities but can also look forward to spending time with forty of the greatest friends they will ever have: their pledge brothers.

The social calendar at the Beta house is covered with numerous events throughout the year. The biggest event held during the fall semester is our formal. In years past, the formal switches off between two places Chicago and Nashville. Formal is the most fun weekend of any Betas fall semester. Another exciting event in the fall is a tradition



known as Wooglin Country Club. This event includes a nine-hole miniature golf course constructed by the Betas themselves.

The Spring semester is host to a longtime Beta tradition. Pig Roast, an event held since 1911, is undoubtedly the most popular party of a Beta's year. During April, Betas and their dates travel to the Lake of the Ozarks to spend a fun-filled weekend beginning with a pig roast on Friday night and spending a day on the lake Saturday.

In addition to these traditional Beta functions, date parties and socials with other sororities occur throughout the school year.

SOCIAL CHAIRMAN



GAVIN O'HEARNE

PHILANTHROPY



Every year, Beta teams up with Alpha Tau Omega for its annual philanthropy event, the BeStrong29 hockey game. Members of both ATO and Beta battle out on the ice in January every year. Members of both organizations and sororities bus down to Washington Park Ice Arena, in Jefferson City to watch the game. The hockey game raises over \$10,000 dollars between both houses, and it is an extremely fun day for everyone who participates.

The BeStrong29 Foundation was started to help and focus on supporting individuals, particularly youth, with permanent, but not limited to, spinal cord

injuries and disabilities through grants, scholarships, research, and other forms of improving their lives and those of their families. The BeStrong29 Foundation offers scholarships to both Physical and Occupational students wishing to specialize but not limited to people with disabilities. The BeStrong Foundation also makes donations on behalf of the foundation to help find a cure for paralysis and improve the quality of life for those living with paralysis.

We are proud to raise over \$10,000 dollars annually for such a great cause. The hockey game also makes for a thrilling game day in the second semester!



PLEDGE CLASS 2024



As a freshman in the Beta house, one will make numerous memories that will last a lifetime. It is almost inconceivable that so many men could come together and become brothers in such a short time. Every man that walks through the doors of 520 South College brings qualities that are unsurpassed by any other house on campus. No matter where that man may be from, he is welcome to aid in continuing the legacy. There is no doubt that joining Beta Theta Pi is the best decision one could make not only as a collegiate student, but also for the rest of their lifetime. The memories of freshman year will stay with the pledge class for the rest of their lives, as they are the most humorous and exciting of them all.

Academics are a very important part of Beta as well. It is no coincidence that Beta places

as a top academic house every year. If one is struggling with a homework assignment, or needs help studying for a test, all one needs to do is walk across the hall, and there are several

others waiting to help. The scholarship program of Beta is perhaps the best attribute. Yet, that is not all that Beta is about. One can develop great friends throughout the campus through various social events, such as Wooglin Country Club, pledge class trips to New Orleans, and Pig Roast. These represent an important counterbalance to the heavy importance placed on scholarship. The mem-

ories from these events are numerous, which is just another reason among many, as to why Beta is the best choice a young man can make. Advancing athletically, academically, socially, and in leadership is what Beta Theta Pi is all about.

3.88

Average HS GPA

27

Average ACT



NOTED FRESHMAN



LIAM JOLLES

HOMETOWN:

KANSAS CITY, MO

HIGH SCHOOL:

SHAWNEE MISSION EAST

MAJOR:

COMPUTER SCIENCE

GPA:

4.0



BLAKE KLOSTERMAN

HOMETOWN:

ST. LOUIS, MO

HIGH SCHOOL:

LAFAYETTE HIGH SCHOOL

MAJOR:

ACCOUNTING

GPA:

4.0



NATE STONEMAN

HOMETOWN:

ST. LOUIS, MO

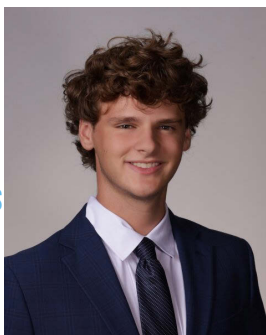
HIGH SCHOOL:

LADUE HORTON WATKINS

MAJOR: FINANCE

GPA:

4.0



COOPER BLAIR

HOMETOWN:

KANSAS CITY, MO

HIGH SCHOOL:

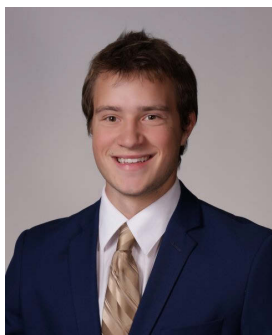
SHAWNEE MISSION EAST

MAJOR:

MECHANICAL ENGINEERING

GPA:

3.786



ALIJAH HIBNER

HOMETOWN:

CHILlicothe, MO

HIGH SCHOOL:

CHILlicothe HIGH

MAJOR:

ACCOUNTING

GPA:

3.94



DANIEL LEVY

HOMETOWN:

ST. LOUIS, MO

HIGH SCHOOL:

JOHN BURROUGHS

MAJOR:

JOURNALISM

GPA:

3.55



BETA THETA PI AND MIZZOU

A powerful combination.

The Zeta Phi chapter of Beta Theta Pi and the University of Missouri have long enjoyed a cooperative relationship that greatly benefits both organizations. Since our founding on campus in 1870, the members of Beta Theta Pi have made countless contributions to the Mizzou community in a number of ways, while at the same time taking advantage of the many opportunities the University of Missouri has to offer.

Within the past few years, Betas have served as executives on Caring for Columbia Steering Committee, Greek Week Steering Committee, GAMMA (Greeks Advocating the Mature Management of Alcohol,) Steering Committee, the Alumni Association Student Board, the Greek Judicial

Board, the Interfraternity Council Executive Board, the Student Athletic Board, RAMS (Rockin' Against Multiple Sclerosis,) Steering Committee, and Summer Welcome.

It is easy to see, then, why Zeta Phi Chapter of Beta Theta Pi is considered the premier fraternity of the University of Missouri Campus. Everywhere you turn on the University of Missouri's campus, you will be able to see the marks of men who spent their collegiate days in the Zeta Phi Chapter of Beta Theta Pi. The buildings on campus alone show the success that men in this Chapter are driven to attain, but also their generous support to the aspects of their lives that helped shape them.

University of Missouri facilities named after the men of Beta Theta Pi

*The Brookfield Building
Cornell Hall
Cramer Hall
Crowder Hall
DeFoe Hall
Francis Quadrangle
Jones Hall
Laws Hall
Laws Observatory
Lefevre Hall
McAlester Hall
Norm Stewart Basketball Court
Park Hall
Rollins Field
Tate Hall
Yeckel Athletic Facility*

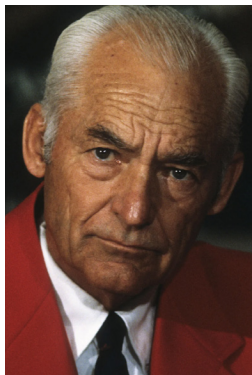
OUR ALUMNI



WILLIAM CORNELIUS
FORMER CHAIRMAN,
UNION ELECTRIC



R. CROSBY KEMPER
FORMER CEO,
UMB



SAM WALTON
FOUNDER,
WALMART



NORM STEWART
FORMER COACH,
MISSOURI BASKETBALL



HAROLD S. HOOK
FORMER CHAIRMAN,
AMERICAN GENERAL CO.



BYRON CALAME
DEPUTY MANAGING
EDITOR
NEW YORK TIMES



JEAN P. BRADSHAW
U.S. ATTORNEY,
KANSAS CITY



WILLIAM C. PHELPS
FORMER LT. GOV.,
STATE OF MISSOURI

University of Missouri Board of Curators

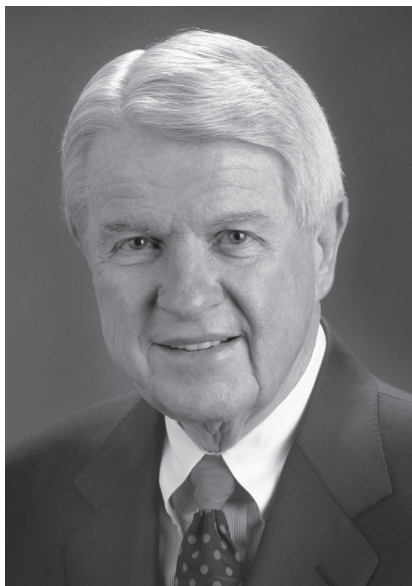
Dr. Hugh E. Stephenson
Former President
William H. Bates
Former President

J. Doyle Patterson
Former President
John H. Dalton, Sr.
Former President

Paul T. Combs
Former President
Michael Williams
Current Curator



ALUMNI CONT.



HARRY M. CORNELL

NAMESAKE BEHIND MISSOURI'S BUSINESS SCHOOL

One of Mizzou's premium classroom buildings is Cornell Hall, home of the College of Business and Public Administration. The building, which opened for classes in the fall of 2002, is one of the most modern and outstanding structures on campus. This new building is named after Beta Harry M. Cornell, Jr., and makes the 16th structure on campus named after Zeta Phi alumni. Cornell moved to the University of Missouri in 1945 from the small town of Carthage. After receiving his BS/BA in 1950, Cornell immediately began working for Leggett and Platt. In only ten short years, he became CEO and began building the small furniture and bedding business into what is now the largest producer-supplier of components for bedding and furniture in the world. At the turn of the century, the company's profits topped \$7 million and their sales hit \$3 billion.



NORMAN STEWART

LONGTIME MIZZOU BASKETBALL COACH

Norman E. Stewart, Missouri '56, was "completely flabbergasted" when the general fraternity asked him to speak at the 1994 National Convention. After the longtime University of Missouri men's basketball coach accepted the invitation, he said: "I'm scared to death. I don't know what an old coach can tell outstanding young men who have so much ability and such backgrounds." As usual, this "old coach" is being modest. Stewart was named 1994 AP National Coach of the Year after leading his Missouri Tigers to the Big Eight championship with a perfect 14-0 conference record, a feat only matched twice in Big Eight history. Stewart captained the MU basketball team his junior and senior year. He also pitched for the Tigers baseball team, 1954 NCAA Champions.



FAMOUS ZETA PHIS IN HISTORY

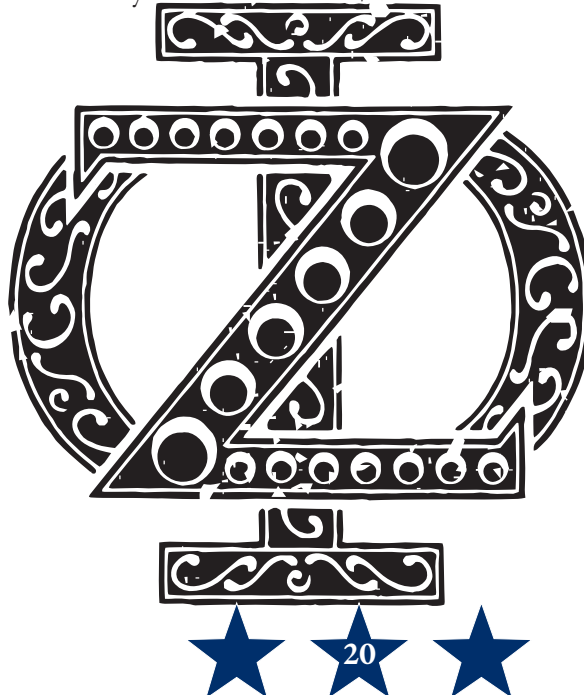
- The founder of Zeta Phi was a university professor who started college at age 14. (Oren Root). His prominent family included his younger brother who was one of the first recipients of the Nobel Peace Prize. (Elihu Root).
- A Zeta Phi conceived of and promoted the concept of a military unit to be known as the “Rough Riders” as a means of uniting young men from across the country in a period when lingering hard feelings from the Civil War were persisting. Teddy Roosevelt later rose to national prominence in part because of his involvement with this unit. (Jay Lynn Torrey)
- A Zeta Phi wrote the first comprehensive federal bankruptcy code. (Jay Lynn Torrey)
- A Zeta Phi served a member of the American delegation to the Paris Peace Conference, which resulted in the Treaty of Versailles. (Thomas S. Barclay)
- A Zeta Phi has served in the United States Senate. (James P. Kem)
- At least two Zeta Phis have served in the US House of Representatives.
- At least six Zeta Phis have served as CEO’s of Fortune 500 companies.
- At least 12 buildings on the University of Missouri campus have been named for Zeta Phis, including Cornell Hall (business school) and Tate Hall (law school).
- A Zeta Phi has won the Presidential Medal of Freedom. (Sam Walton)
- A Zeta Phi leveraged his personal relationship with Chinese leader Mao Zedong to convey a personal invitation to President Richard Nixon that played a key role in the normalization of relations between the United States and China. (Edgar Snow)
- A Zeta Phi has served as Chief Judge of a US Court of Appeals. (Kimbrough Stone)
- A Zeta Phi has won an Oscar. (Daniel Lindsay)
- Two Zeta Phis have won Grammys. (Steve Cash/Ozark Mountain Daredevils and Mike Fleming/SteelDrivers)
- A Zeta Phi led Missouri through the Great Depression as Governor. (Guy B. Park)
- Three Zeta Phis have served as Lt. Governor of Missouri. (Thomas Rubey, William C. Phelps, Peter Kinder)
- The largest corporation in the world by revenue was founded by a Zeta Phi. (Sam Walton).
- The same Zeta Phi created a family fortune that today is greater than that of Jeff Bezos and Bill and Melinda Gates, combined. (Sam Walton)
- Four Zeta Phis have been Rhodes Scholars. (Hunt, Parker, Hamilton and Giordano)
- A Zeta Phi was the founding director of the US Agency for International Development. (Fowler Hamilton)
- A Zeta Phi founded one of



the most prestigious law firms on

Wall Street. (Fowler Hamilton)

- A Zeta Phi invented one of the first heart defibrillators. (Hugh E. Stephenson, Jr. MD)
- Zeta Phis have served the University as President, Dean of the Medical School and Dean of the Law School.
- Fifteen Zeta Phis have served on the University Board of Curators and six have served as its president.
- The MU Department of Surgery is named in honor of a Zeta Phi. (Hugh E. Stephenson Jr. MD)
- A Zeta Phi conceived of the “Whistle Stop Campaign” that propelled President Harry Truman to a narrow victory in 1948. (Gen. Donald Dawson)
- A Zeta Phi has served as an admiral in the Navy. (Daniel McKinnon).
- A Zeta Phi obtained the rank of three-star general and was comptroller of the US Air Force. (George M. Browning, Jr.)
- A Zeta Phi has written a number one best-selling book on the New York Times Book List. (David Limbaugh).
- A Zeta Phi chaired a commission that was in charge of constructing the St. Louis Gateway Arch. (Sidney Maestre)
- A Zeta Phi chaired a commission that was in charge of constructing the Truman Sports Complex in Kansas City. (Dutton Brookfield)
- A Zeta Phi chaired a commission that built the Missouri State Capitol. (Edward Stephens)
- A Zeta Phi served as President of the Southern Baptist Convention. (Edward Stephens)
- A Zeta Phi was named national Division I football coach of the year (Gary Barnett)
- A Zeta Phi wrote a song that went to number one on the pop charts. (Steve Cash)
- A Zeta Phi founded a charity that has raised over \$110 million dollars. (Norm Stewart)



THE HOUSE



The Beta House stands triumphantly at the corner of College and Wilson, close to the heart of Missouri's campus. Consisting of a main house and the annex, there are fewer nicer places than this complex to live out your undergraduate career. The main house was just completely rebuilt in 2012.

The main house contains everything you need to succeed in your time at Mizzou. It has multiple study rooms, hangout rooms, an auditorium, a weight room, cafeteria, multiple bathrooms, and even a basketball court outside. Every suite in the main house is equipped with its own personal bathroom for the suitemates. The annex, constructed in 1987 and just recently renovated in 2022, is mostly just bedrooms and bathrooms for the sophomores and some juniors. However, these rooms are significantly more personal as you share them with one

suitemate opposed to four.

The cost to the freshman class during the 2022-2023 school year was approximately \$14,992.* This total includes the house bill itself, the annual building fee, internet fees, and a security deposit. When one takes into account the rising cost of dorm life and the additional amenities and benefits one receives at the Beta House, this cost is very competitive. The Zeta Phi Chapter of Beta Theta Pi also has its own scholarship foundation, known as the Zeta Phi Society. It exists to provide scholarship assistance to worthy brothers in a need-based fashion. Over \$100,000 of scholarships are awarded each year. Scholarships range from \$500 to full tuition. Within the last few years, The Zeta Phi Chapter of Beta Theta Pi has also offered scholarships to its incoming freshmen as well.

FROM OUR PRESIDENT...



Since our inception in 1870, the Zeta Phi Chapter of Beta Theta Pi has offered the premier collegiate experience at the University of Missouri. We are a fraternal organization with around 140 members who base ourselves on our values, brotherhood, and achievements. Whether in the classroom, on the intramural field, or in life's daily pursuits, the men of Zeta Phi settle for nothing less than their best.

In the ensuing weeks and months, you will be presented with many options regarding your years at the University of Missouri – choices between residence halls, Freshmen Interest Groups, and fraternities. It is my earnest belief that among your abundant options, Beta Theta Pi stands tallest: offering lifelong friendships, unparalleled leadership opportunities, and a moral standard to its worthy members. I encourage you, while weighing your options, to use the name of Beta Theta Pi on campus. Question advisors, professors, summer welcome leaders, and members of the community about our integrity and tradition of excellence at 520 South College Avenue, you will be im-

pressed with the responses – such is my faith in the reputation of our Chapter.

As I look back at my college career thus far, I recognize that my happiness, enjoyment, and success are due in no small measure to my affiliation with the Zeta Phi Chapter of Beta Theta Pi. My treasured friendships, academic accomplishments, and cultivated leadership abilities are direct products of my membership in Beta Theta Pi.

I, along with the other members of our beloved chapter, wish you the best of luck in this exciting period of choices. I sincerely hope that you consider aspiring to the tradition of the Zeta Phi Chapter of Beta Theta Pi.

Sincerely,

Daniel Devine

PRESIDENT

(573)-305-2123

DANIEL.W.DEVINE@MISSOURIBETA.COM



Beta Theta Pi
520 S. College Ave.
Columbia, MO 65201
United States

Questions? Contact us:



@beta_mizzou



ZetaPhiBetaThetaPi



rush@missouribeta.com

Find more info at:
<http://missouribeta.com>

